

IMPROVEMENT PLANS

GRANT ROAD EXTENSION & PARKING LOT

3761 GRANT STREET
 RICHFIELD, OHIO 44286
 APRIL 2022



INDEX OF DRAWINGS	
TITLE SHEET	TS-001
CIVIL GENERAL NOTES	C-001
SWPP NOTES	C-010
SWPP DETAILS	C-011
SEDIMENT BASIN DETAILS	C-012
SWPP PLAN	C-013
DEMOLITION PLAN	C-101
SITE PLAN	C-111
GRADING PLAN	C-121
GRADING PLAN ENLARGEMENTS	C-122
DETENTION BASIN PLAN	C-123
UTILITY PLAN	C-131
ROADWAY PROFILES	C-200
CIVIL DETAILS	C-501
CIVIL DETAILS	C-502
CIVIL DETAILS	C-503
CIVIL DETAILS	C-504
ELECTRICAL NOTES	E-010
ELECTRICAL DETAILS	E-011
ELECTRICAL DEMO PLAN	E-110
ELECTRICAL SITE PLAN	E-111
PHOTOMETRIC PLAN	E-112

PROJECT DESCRIPTION

RICHFIELD LIBRARY PARKING LOT EXPANSION WITH ADDITIONAL SITE IMPROVEMENTS FOR FUTURE DEVELOPMENT(S). THE MAJOR SITE IMPROVEMENTS INCLUDE NEW ACCESS DRIVES TO BROADVIEW ROAD AND GRANT STREET, ADDITIONAL PARKING, AN UPDATED STORM PIPE NETWORK, AND AN EXPANDED DETENTION BASIN WITH WATER QUALITY ELEMENTS.

OHIO SPECIFICATION

THE STANDARD SPECIFICATIONS OF THE STATE OF OHIO, DEPARTMENT OF TRANSPORTATION, INCLUDING CHANGES AND SUPPLEMENTAL SPECIFICATIONS LISTED IN THE PROPOSAL SHALL GOVERN THIS IMPROVEMENT.

PLAN REPRODUCTION WARNING
 THE PLANS HAVE BEEN PREPARED FOR PRINTING ON ANSI D (22"x34") SHEETS. PRINTING ON OTHER SIZE SHEETS MAY DISTORT SCALES. REFER TO GRAPHIC SCALES.

REV.	DATE	DESCRIPTION



GRANT ROAD EXTENSION & PARKING LOT
 3761 GRANT STREET
 RICHFIELD, OHIO 44286

TITLE SHEET

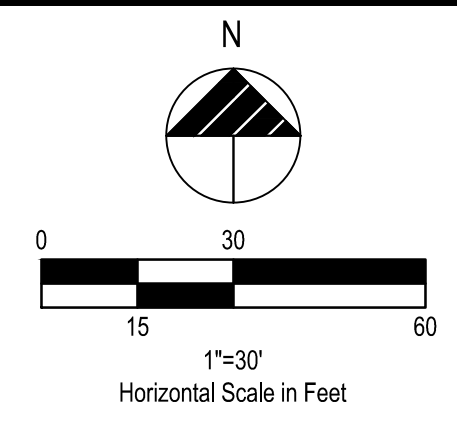
ISSUED FOR:	
PERMIT	XX/XX/XX
BID	XX/XX/XX
CONSTRUCTION	XX/XX/XX
RECORD	XX/XX/XX

PROJECT MANAGER	DESIGNER
MLH	ACM

JOB NO.
 2020097.24

TS-001





GENERAL SHEET NOTES

- FOR STORMWATER POLLUTION PREVENTION SEE SHEETS C-010 THROUGH SHEET C-013.
- ALL PAVEMENT, CURB, AND SIDEWALK TO BE REMOVED SHALL BE SAWCUT FULL DEPTH AT EXISTING CONSTRUCTION JOINTS. ALL SAWCUTTING SHALL BE DONE WET TO CONFORM TO THE OHIO EPA'S FUGITIVE DUST ACT.
- CONTRACTOR TO PROVIDE TOPSOIL AND PERMANENT SEED IN ALL DISTURBED AREAS PER SHEET C-010.
- ALL TOPSOIL SHALL BE SCREENED PRIOR TO PLACEMENT. EROSION CONTROL MATTING SHALL BE PLACED ON ALL SLOPES OF 10:1 OR GREATER IN THE TEMPORARY AND PERMANENT SEEDING CONDITIONS.

PLAN KEYNOTES

- PROPOSED P.C.C. CURB, SEE SHEET C-501.
- PROPOSED P.C.C. CURBED WALK, SEE SHEET C-501.
- PROPOSED P.C.C. WALK, SEE SHEET C-501.
- PROPOSED PAINTED 4" WIDE SOLID WHITE STRIPE, SEE PAVEMENT MARKINGS AND NOTES ON SHEET C-501
- PROPOSED PAINTED 4" WIDE SOLID BLUE STRIPE, SEE PAVEMENTS MARKINGS AND NOTES ON SHEET C-501.
- PROPOSED PAINTED INTERNATIONAL ADA SYMBOL PER ADA SPECIFICATIONS AND SHEET C-502.
- PROPOSED PAINTED TRANSVERSE STRIPING, SEE SHEET C-501.
- PROPOSED ADA ACCESSIBLE RAMP PER ADA SPECIFICATIONS. SEE THIS SHEET FOR TYPE AND SHEET C-502 FOR DETAILS.
- PROPOSED PAINTED CROSS WALK STRIPING, SEE SHEET C-501.
- PROPOSED "STOP" SIGN, SEE SHEET C-501.
- PROPOSED 3" CURB TAPER, SEE SHEET C-501.
- PROPOSED ADA PARKING SIGN IN CRASH-RATED BOLLARD (SEE PLAN FOR VAN ACCESSIBLE SPACE. PROVIDE APPROPRIATE SIGNAGE PER DETAIL), SEE SHEET C-502.
- PROPOSED CONCRETE HEADER, SEE SHEET C-502.
- PROPOSED PAINTED 12" WIDE SOLID WHITE STRIPE, SEE PAVEMENT MARKINGS AND NOTES ON SHEET C-501.
- PROPOSED ODOT ADA RAMP. CONTRACTOR TO ADJUST GRADES TO MEET ADA REQUIREMENTS PER ODOT STANDARDS. SEE SHEET C-503.
- PROPOSED ELECTRICAL STRUCTURE, SEE ELECTRICAL PLANS.
- PROPOSED PAINTED CROSSWALK PER ODOT STANDARDS, SEE SHEET C-503
- PROPOSED CONCRETE SIDEWALK PER ODOT ITEM 608 - 4" CONCRETE WALK WITH 4" AGGREGATE BASE.
- PROPOSED UTILITY STRUCTURE, SEE UTILITY PLAN.
- PROPOSED CONCRETE CATCH BASIN WITH CONCRETE COLLAR, SEE SHEET C-504.
- PROPOSED ROCK CHANNEL PROTECTION, SEE SHEET C-123.
- PROPOSED LIGHT POLE AND FOUNDATION, SEE ELECTRICAL PLANS.
- RELOCATED SIGN TO BE FASTENED TO EXISTING LIGHT POLE USING VANDAL-PROOF HARDWARE.
- RELOCATED MAILBOX
- PROPOSED CONCRETE SIDEWALK PER ODOT ITEM 608 - 4" CONCRETE WALK WITH 4" AGGREGATE BASE. CONTRACTOR TO MATCH EXISTING BACK OF CURB ELEVATIONS AND ADJUST GRADES TO MEET ADA REQUIREMENTS.
- PROPOSED LANDSCAPING. CONTRACTOR TO ADJUST LANDSCAPING TO BE FLUSH WITH THE PROPOSED WALK.
- PROPOSED FULL HEIGHT HEADWALL, SEE UTILITY PLAN.

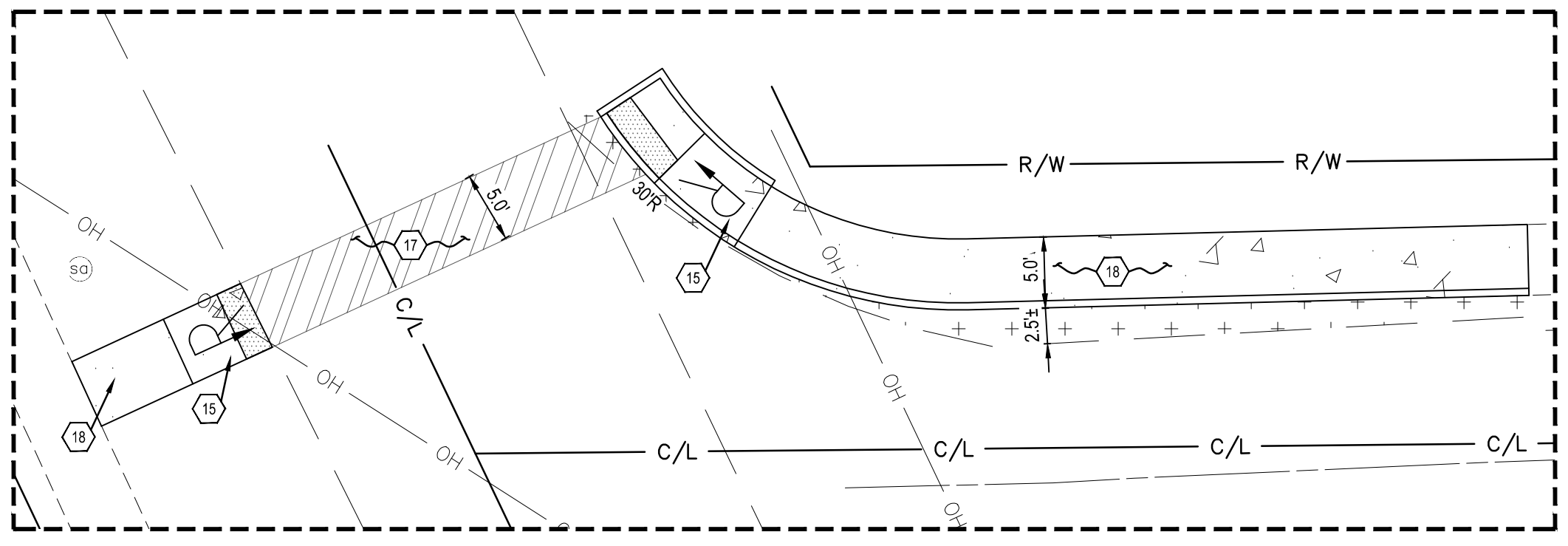
LAND USE DATA

	% OF SITE AREA	AREA PROVIDED
IMPERVIOUS	13.4 %	1.87 AC.
PERVIOUS	86.6 %	12.07 AC.
TOTAL	100%	13.94 AC.

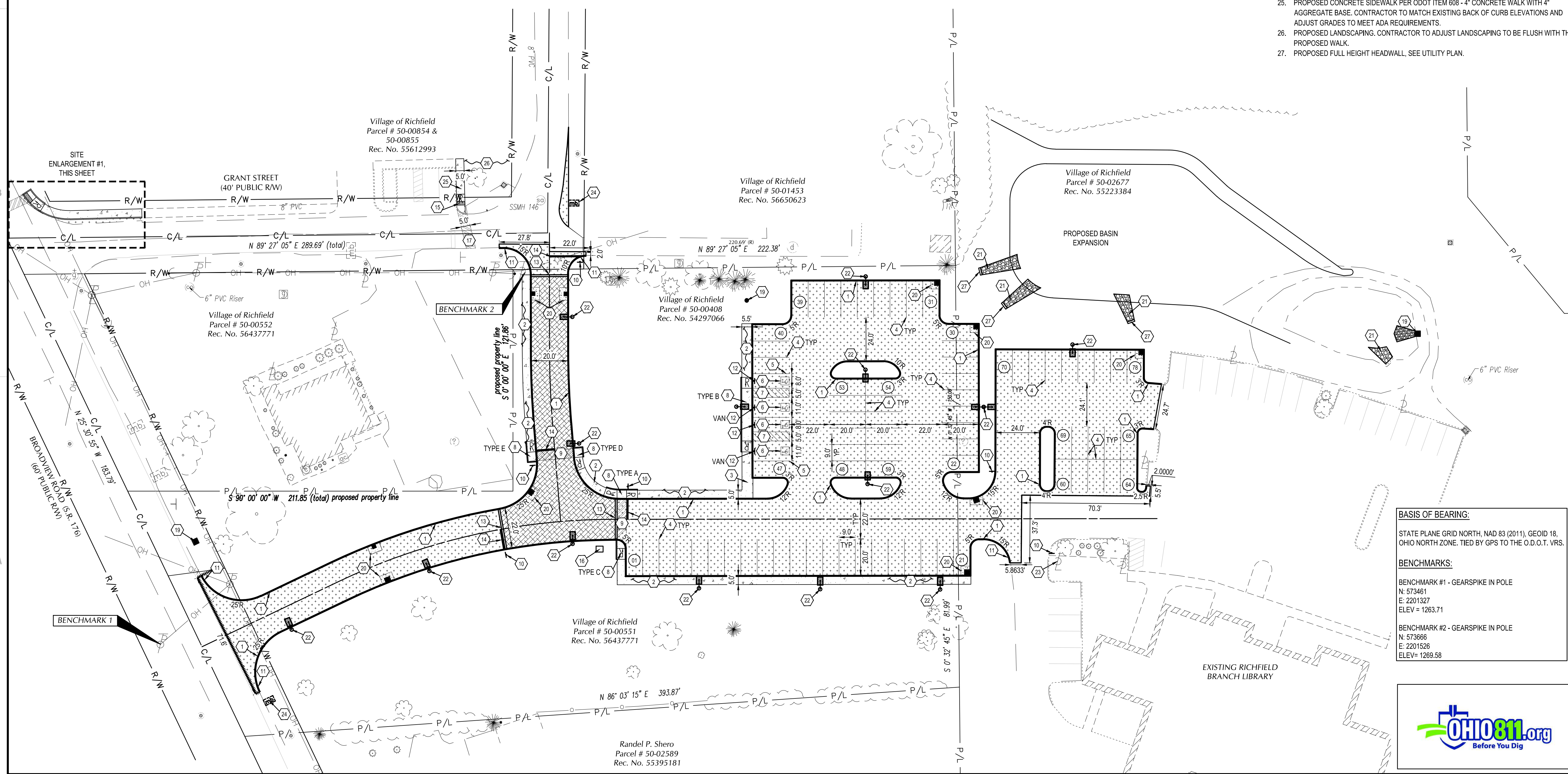
CURRENT ZONING: CH1 HISTORICAL COMMERCIAL AND R-2 SINGLE-FAMILY RESIDENTIAL

LEGEND
(SEE SHEET C-001 FOR GENERAL LEGEND)

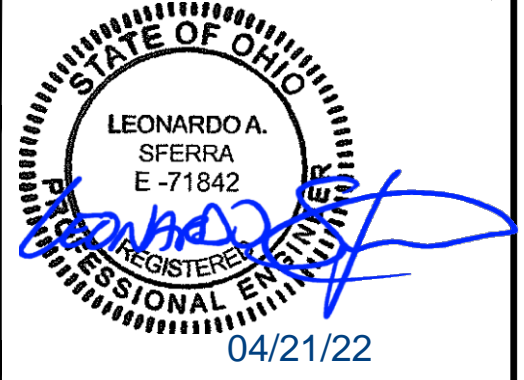
- PROPOSED HEAVY DUTY ASPHALT PAVEMENT. SEE SHEET C-501.
- PROPOSED CONCRETE WALK. SEE SHEET C-501.
- PROPOSED PERMEABLE PAVEMENT. SEE SHEET C-502.
- CONSTRUCTION KEYNOTE
- PROPOSED PARKING SPACE NUMBER



C1 SITE ENLARGEMENT #1
1" = 10'



REV.	DATE	DESCRIPTION



GRANT ROAD EXTENSION & PARKING LOT
 3761 GRANT STREET
 RICHFIELD, OHIO 44286

SITE PLAN

BASIS OF BEARING:
 STATE PLANE GRID NORTH, NAD 83 (2011), GEOID 18, OHIO NORTH ZONE. TIED BY GPS TO THE O.D.O.T. VRS.

BENCHMARKS:
 BENCHMARK #1 - GEARSPIKE IN POLE
 N: 573461
 E: 2201327
 ELEV = 1263.71

BENCHMARK #2 - GEARSPIKE IN POLE
 N: 573666
 E: 2201526
 ELEV = 1269.58

ISSUED FOR:

PERMIT	XX/XX/XX
BID	XX/XX/XX
CONSTRUCTION	XX/XX/XX
RECORD	XX/XX/XX

PROJECT MANAGER	DESIGNER
MLH	ACM

JOB NO.
2020097.24

C-111

